

PROPERTY REPORT

3024 N Valley Green Way, Meridian, ID 83646



Presented by

Marcy Kriege | Realtor/MBA



Mobile: (949) 556-1172 | Office: (562) 884-0476 | Fax: 949-625-8925

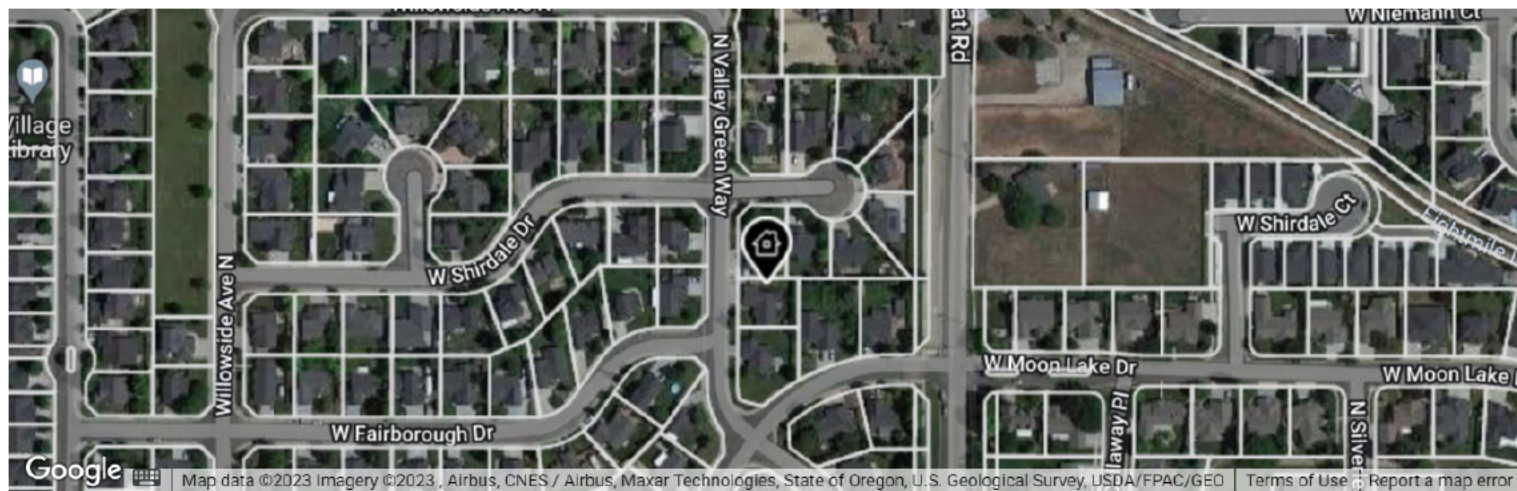
Main: Marcy@TeamKriege.com

Broker: HomesWithGreatSchools.com

First Team Real Estate

12501 Seal Beach Blvd., Suite 100
Seal Beach, CA 90740

3024 N Valley Green Way, Meridian, ID 83646



Legend:  Subject Property

● Active • New, Active: 9/21/2023

List Price

\$499,000

Active Date: 9/21/2023
Listing ID: 98890484

Current Estimated Value

\$482,750

Last RVM® Update: 9/26/2023

RVM® Est. Range: \$439K – \$526K

RVM® Confidence: ★★★★★

↓ RVM® Change - Last 1 Month: -\$620

↓ RVM® Change - Last 12 Months: -1.41%

This report contains data and information that is publicly available and/or licensed from third parties and is provided to you on an "as is" and "as available" basis. The information is not verified or guaranteed. Neither this report nor the estimated value of a property is an appraisal of the property. Any valuation shown in this report has been generated by use of proprietary computer software that assembles publicly available property records and certain proprietary data to arrive at an approximate estimate of a property's value. Some portions of this report may have been provided by an RPR user; RPR is not responsible for any content provided by its users. RPR and its information providers shall not be liable for any claim or loss resulting from the content of, or errors or omissions in, information contained in this report.

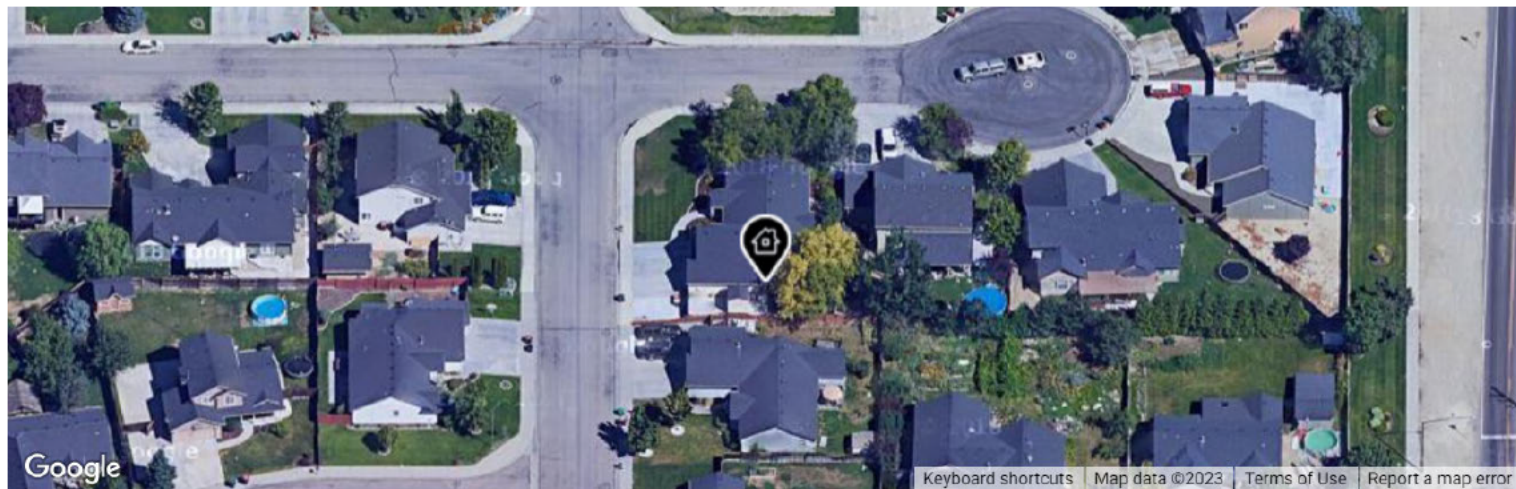
Home Facts

Public Remarks

This meticulously maintained 3-bed, 2-bath home in a prime neighborhood is a true gem. Impeccable updates and modern updated fixtures throughout create an inviting ambiance. This property also comes with a convenient garage shop, providing extra storage and workspace for your hobbies and projects. Don't miss this opportunity to call this house your forever home in a fantastic neighborhood.

Home Facts	Public Facts	Listing Facts	Realtor Refinements
Property Type	Single Family	Single Family	—
Property Subtype	Single Family Residential	Single Family	—
Bedrooms	3	3	—
Total Baths	2	2	—
Full Baths	2	2	—
Partial Baths	—	—	—
Living Area (sq ft)	1,605	1,980	—
Building Area (sq ft)	1,605	1,980	—
Lot Size	9,365 sq ft	9,365 sq ft	—
Lot Dimensions	9365 SF	—	—
Garage	Yes	Attached	—
Garage (spaces)	3	3	—
Year Built	2004	2004	—
Roofing	—	Composition Shingle	—
Heating	Yes	Forced Air, Gas	—
Cooling	Yes	Central Air	—
Exterior Walls	Wood	—	—
Number of Units	0	—	—
Number of Stories	1 story with Attic	Single With Upstairs Bonus Room	—

Extended Home Facts



Legend:  Subject Property

Interior Features

Cooling	Central Air
Heating	Forced Air, Gas
Kitchen	Breakfast Bar, Dishwasher, Disposal, Dryer, Microwave, Refrigerator, Washer
General	Master Bath, Master Bedroom, Main Level, Rec Room
Approximate Finished	1980 sq ft

Exterior Features

Garage	Attached
Roof	Composition Shingle
Sprinkler	Auto Sprinkler, Full, Irrigation
Sewer	Connected
Levels	Single With Upstairs Bonus Room
Water	City Water
Lot Size Features	Garden Space, Rv Parking Available, Storage Shed
Lot Size Range	Standard Lot 6000-9999 SF

Location Details

Subdivision	Autumn Faire
Zoning	R-4

Homeowners Association Info

Dues	\$225
Payments per Year	1

Schools (from Listing Data)

Elementary School	Ponderosa Elementary School
Middle School	Meridian Middle School
High School	Meridian High School
School District	West Ada School District

(based on location)

Elementary School	Ponderosa Elementary School
Middle School	Meridian Middle School
High School	Meridian High School
School District	West Ada School District

AARP Livability™ Index for 83646

This chart rates the overall livability of a selected ZIP code on a scale from 0 to 100. AARP Livability™ is a trademark of AARP Inc.

Data Source: [AARP](#)

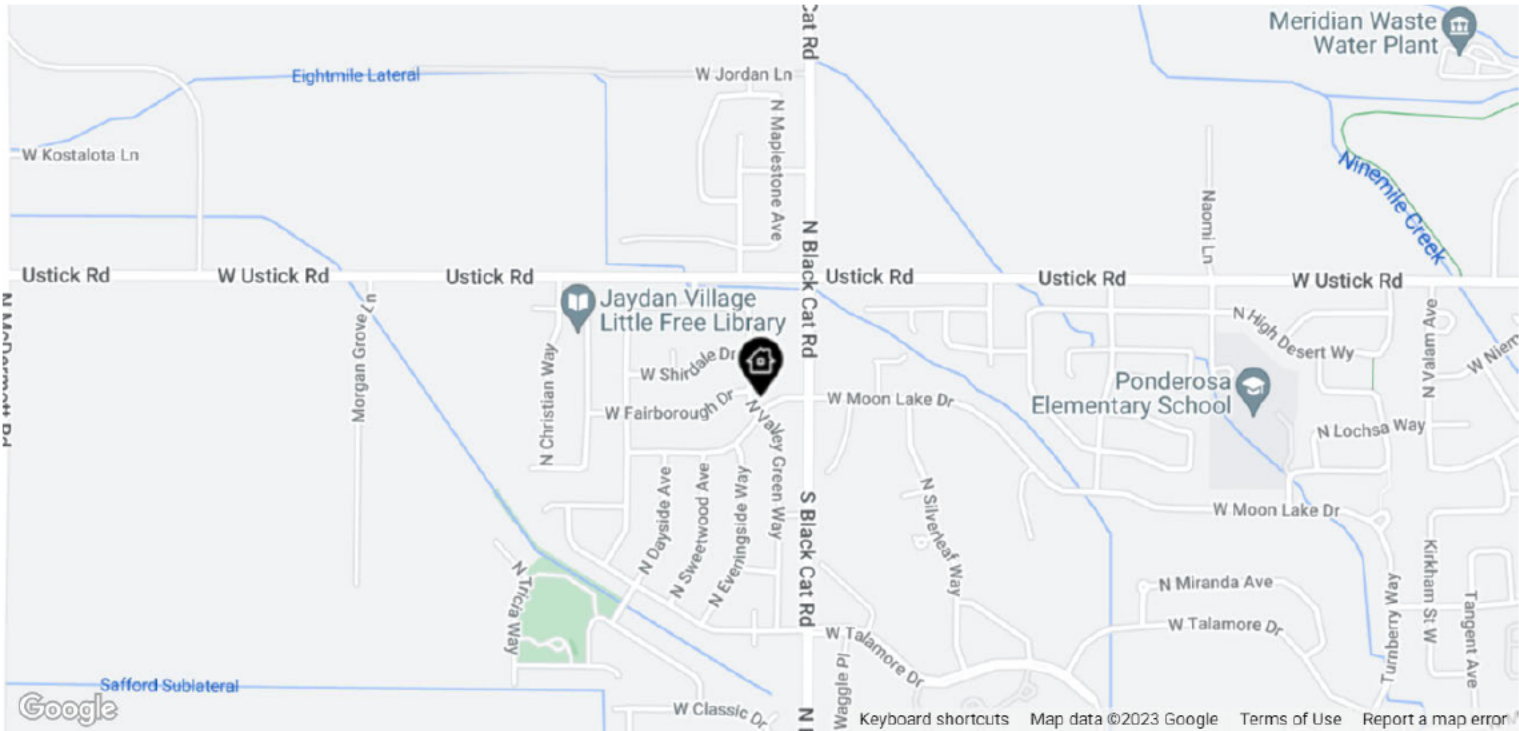
Update Frequency: Annual

0-19 20-39 40-59 60-79 80-100



Housing	40
Affordability & Access	
Neighborhood	53
Access to Life, Work & Play	
Transportation	41
Safe & Convenient Options	
Environment	56
Clean Air & Water	
Health	65
Prevention, Access & Quality	
Engagement	48
Civic & Social Involvement	
Opportunity	60
Inclusion & Possibilities	

Comps and Adjustments



LEGEND: Subject Property Pending For Sale or For Lease Distressed Recent Sale Off Market

This Property



Active	Proxim.	Days in RPR	Date	Amount	\$/sq ft	Living Area	Lot Size	Beds	Baths	Built
3024 N Valley Green Way Meridian, ID 83646	—	28 days	—	—	\$252	1,980 sq ft	9,365 sq ft	3	2	2004

No comps have been selected for this property.