

PROPERTY REPORT

# 9338 Christopher St, Cypress, CA 90630



Presented by

**Marcy Kriege** | Realtor/MBA

California Real Estate License: 01297087



Mobile: (949) 556-1172 | Fax: 949-625-8925

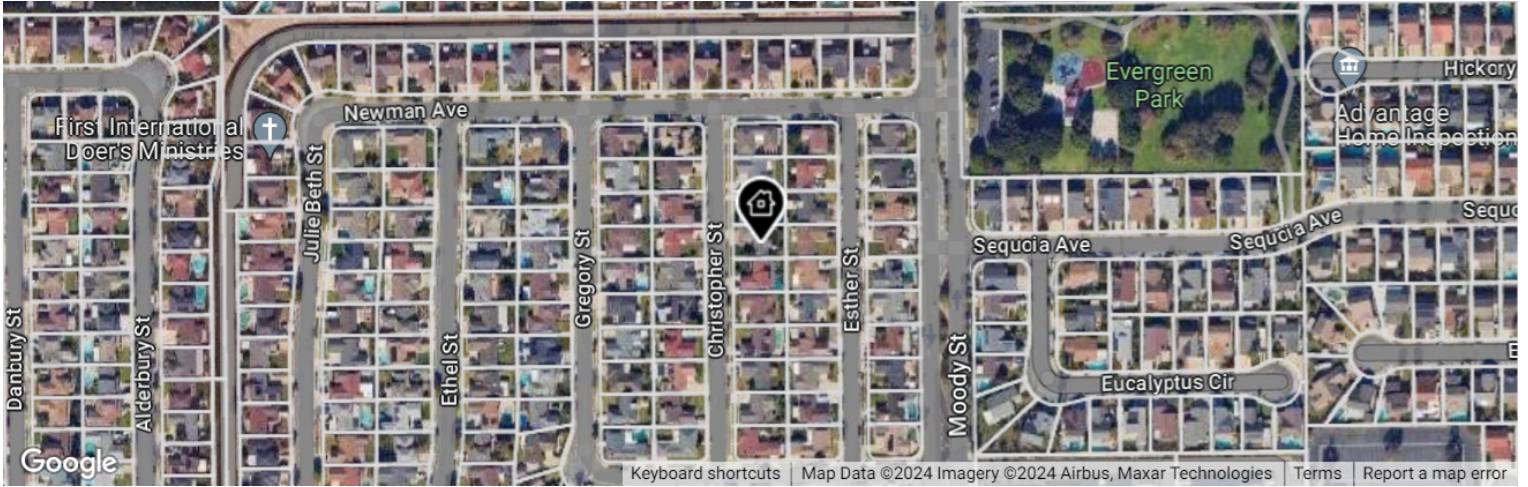
Main: [Marcy@TeamKriege.com](mailto:Marcy@TeamKriege.com)

Broker: [HomesWithGreatSchools.com](http://HomesWithGreatSchools.com)

**First Team Real Estate**

12501 Seal Beach Blvd., Suite 100  
Seal Beach, CA 90740

# 9338 Christopher St, Cypress, CA 90630



Legend: Subject Property

● Active Under Contract \*AUC as of 10/28/2024

## List Price

**\$1,179,000**

Active Under Contract Date: 10/28/2024  
Listing ID: PW24213879

## Current Estimated Value

**\$1,227,100**

Last RVM® Update: 11/4/2024

RVM® Est. Range: \$1.1M – \$1.35M

RVM® Confidence: ★★★★★

↑ RVM® Change - Last 1 Month: \$15,920

↑ RVM® Change - Last 12 Months: 11.95%

*This report contains data and information that is publicly available and/or licensed from third parties and is provided to you on an "as is" and "as available" basis. The information is not verified or guaranteed. Neither this report nor the estimated value of a property is an appraisal of the property. Any valuation shown in this report has been generated by use of proprietary computer software that assembles publicly available property records and certain proprietary data to arrive at an approximate estimate of a property's value. Some portions of this report may have been provided by an RPR user; RPR is not responsible for any content provided by its users. RPR and its information providers shall not be liable for any claim or loss resulting from the content of, or errors or omissions in, information contained in this report.*

# Home Facts

## Public Remarks

Welcome to 9338 Christopher St, a beautifully upgraded 2-story home nestled in the highly desirable Somerset community in Cypress. This property is a blend of comfort, style, and functionality, offering 4 bedrooms, 2 bathrooms, and an expansive 1,996 square feet of living space. From the moment you arrive, the curb appeal captures your attention with its tasteful use of pavers, stacked rock planters, a flourishing avocado tree, and a low-maintenance synthetic lawn that promises greenery year-round without the upkeep. Step inside to discover a home that radiates warmth and welcome. The main level features the primary bedroom and a second bedroom with a convenient bathroom equipped with a walk-in shower. The interior is freshly painted. Upstairs has new plush carpeting. Downstairs features durable laminate flooring, ensuring both comfort and style. Ascending to the upper level, you will find two additional bedrooms and a full bathroom, complete with a tub/shower combo, offering ample space for family, guests, or a home office. Natural light floods the home, creating an airy and inviting atmosphere that enhances the fresh, neutral palette. Step outside to the private backyard, an oasis of fruit and fragrance with trees including tangerine, persimmon, dragonfruit, kumquat, plumcot, fig, and lemon. This enchanting garden space is perfect for relaxing, gardening, or entertaining in a serene environment. This home's location is unparalleled, conveniently situated close to schools, parks, and the community center, which boasts a library and tennis courts. This combination of a well-appointed home in a prime location makes 9338 Christopher St a rare gem. With its thoughtful upgrades and idyllic setting, your search for the perfect home could end right here. Experience the best of Cypress living in a home that offers both beauty and practicality.

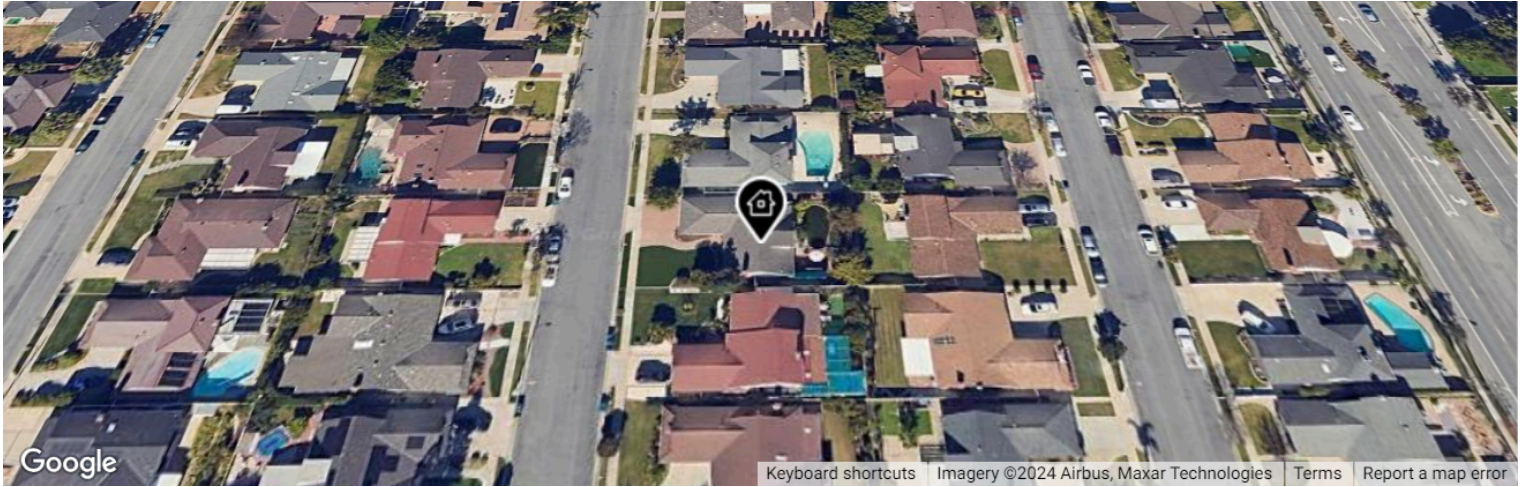
Home Facts	Public Facts	Listing Facts	Realtor Refinements
Property Type	<b>Single Family</b>	<b>Single Family</b>	-
Property Subtype	<b>Single Family Residential</b>	<b>Single Family Residence</b>	-
Bedrooms	<b>4</b>	<b>4</b>	-
Total Baths	<b>2</b>	<b>2</b>	-
Full Baths	<b>2</b>	<b>1</b>	-
Partial Baths	<b>-</b>	<b>1</b>	-
Living Area (sq ft)	<b>1,996</b>	<b>1,996</b>	-
Building Area (sq ft)	<b>1,996</b>	<b>1,996</b>	-
Lot Size	<b>6,300 sq ft</b>	<b>6,298 sq ft</b>	-
Lot Dimensions	<b>6300 SF</b>	<b>-</b>	-
Garage	<b>Yes</b>	<b>Yes</b>	-
Garage (spaces)	<b>2</b>	<b>2</b>	-
Pool	<b>-</b>	<b>None</b>	-
Year Built	<b>1965</b>	<b>1965</b>	-
Total Rooms	<b>7</b>	<b>-</b>	-
Roofing	<b>-</b>	<b>Composition</b>	-
Heating	<b>-</b>	<b>Central</b>	-
Cooling	<b>Yes</b>	<b>Central Air</b>	-
Fireplaces	<b>-</b>	<b>Yes</b>	-
Foundation	<b>-</b>	<b>Slab</b>	-
Construction	<b>-</b>	<b>Stucco, Wood Siding</b>	-
Number of Units	<b>0</b>	<b>-</b>	-
Number of Stories	<b>2</b>	<b>2</b>	-

## Homeowner Facts

Owner Name (Public)	<b>Rozelle, Douglas A Tr</b>
Mailing Address	<b>9338 Christopher St Cypress CA 90630-2813</b>
Vesting	<b>Trust/Trustee/Conservator</b>
Owner Occupied	<b>Yes</b>



# Extended Home Facts



Legend: Subject Property

## Interior Features

<b>Appliance</b>	Dishwasher, Gas Range, Microwave
<b>Bathroom</b>	Bathtub, Shower, Tub With Shower, Double Sinks, Updated Baths, Walk-In Shower
<b>Cooling</b>	Central Air
<b>Dining</b>	Area
<b>Fireplace</b>	Living Room
<b>Floor</b>	Carpet, Laminate, Vinyl
<b>Heating</b>	Central
<b>Kitchen</b>	Corian Counters , Remodeled Kitchen
<b>Laundry</b>	In Garage, Inside
<b>General</b>	Ceiling Fans, Corian Counters, Open Floor Plan , Pantry
<b>Window</b>	Double Pane Windows
<b>Room Details</b>	Main Floor Br, Walk-In Closet

## Interior Details

**Garage** 488 sq ft

## Exterior Features

<b>Construction</b>	Stucco, Wood Siding
<b>Fence</b>	Block
<b>Foundation</b>	Slab
<b>Patio</b>	Brick, Slab
<b>Roof</b>	Composition
<b>Spa</b>	None
<b>Pool</b>	None
<b>Parking</b>	Direct Garage Access
<b>Parking Spaces</b>	2
<b>Sewer</b>	Public Sewer
<b>Levels</b>	Two
<b>Water</b>	Public
<b>View</b>	Neighborhood

## Exterior Details

**Lot Size - Square Feet** 6,300 sq ft  
**Lot Size - Acres** 0.15 acres

**Lot Size Features** Back Yard, Front Yard, Garden, Landscaped

**Location Details**

**Directions to Property** North of Orange/ West of Moody  
**Community Features** Curbs, Sidewalks

**Schools (from Listing Data)**

**Middle School** Lexoxf  
**High School** Cypoxf  
**School District** Anaheim Union High

(based on location)

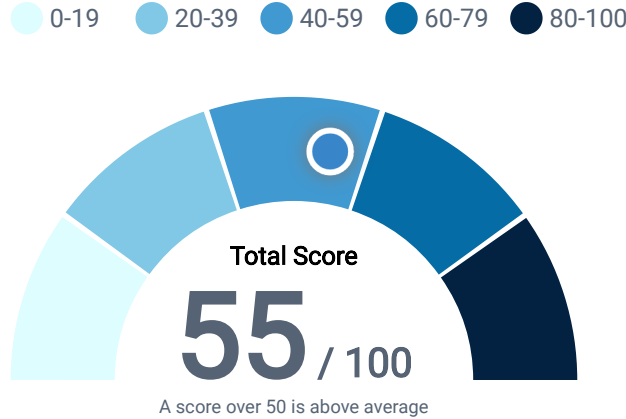
**Elementary School** A.E. Arnold Elementary School  
**Middle School** Lexington Junior High School  
**High School** Cypress High School  
**School Districts** Cypress Elementary School District  
 Anaheim Union High School District

**AARP Livability™ Index for 90630**

This chart rates the overall livability of a selected ZIP code on a scale from 0 to 100. AARP Livability™ is a trademark of AARP Inc.

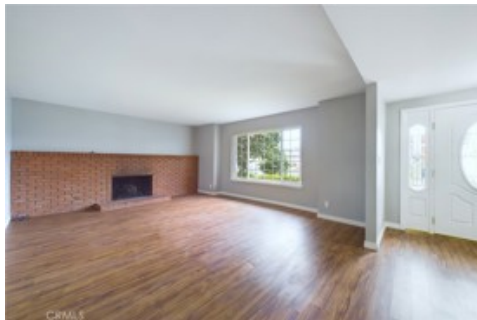
Data Source: [AARP](#)

Update Frequency: Annual



- Housing** 43  
Affordability & Access
- Neighborhood** 67  
Access to Life, Work & Play
- Transportation** 51  
Safe & Convenient Options
- Environment** 50  
Clean Air & Water
- Health** 71  
Prevention, Access & Quality
- Engagement** 43  
Civic & Social Involvement
- Opportunity** 62  
Inclusion & Possibilities

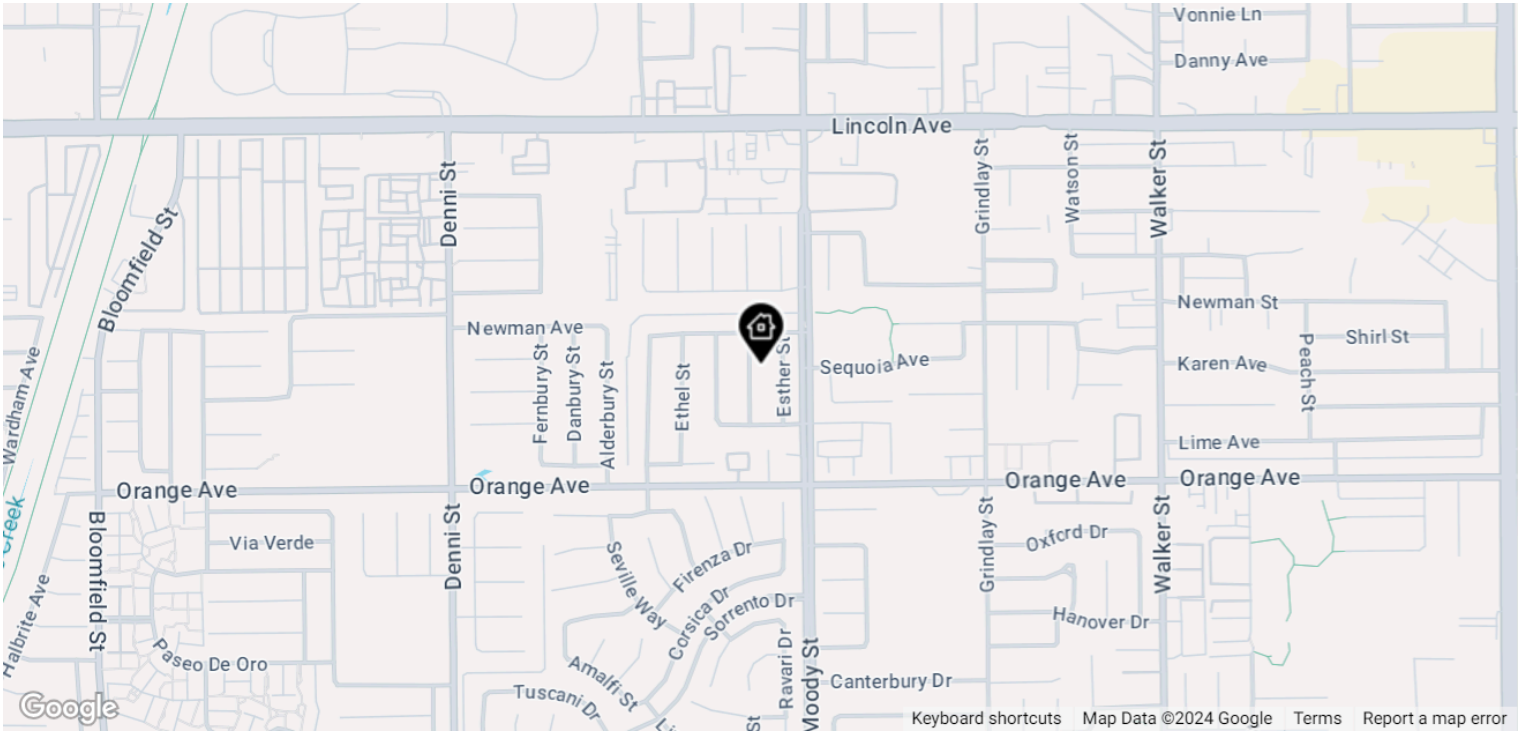
# Property Photos







# Comps and Adjustments



LEGEND: Subject Property Pending For Sale or For Lease Distressed Recent Sale Off Market

## This Property



**Active Under Contract**  
 9338 Christopher St  
 Cypress, CA 90630

Proxim.	Days in RPR	Date	Amount	\$/sq ft	Living Area	Lot Size	Beds	Baths	Built
-	19 days	-	-	\$591	1,996 sq ft	6,298 sq ft	4	2	1965

No comps have been selected for this property.



# Property History

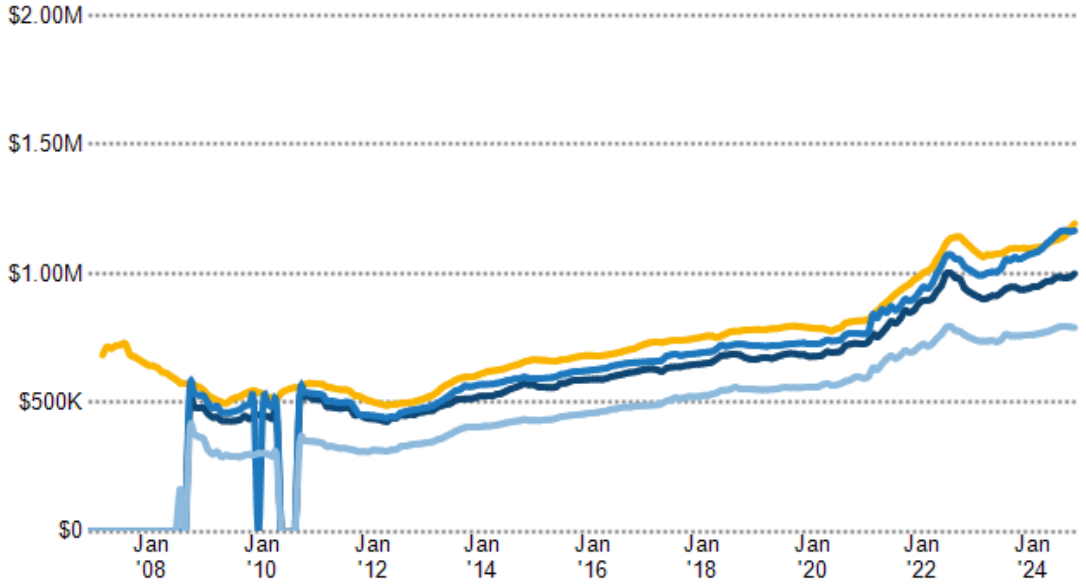
## Median Estimated Home Value

This graphic displays property estimates for a market area and a subject property, where one has been selected. Estimated property values are generated by a valuation model and are not formal appraisals.

Data Source: Public records, and MLS sources where licensed

Update Frequency: Monthly

- This Property
- Cypress
- Orange County
- California



## Assessed Values

Date	Improvements	Land	Total	Tax
2024	\$69,608	\$27,612	\$97,220	\$1,371
2023	\$68,244	\$27,070	\$95,314	\$1,335
2022	\$66,906	\$26,540	\$93,446	\$1,313
2021	\$65,595	\$26,019	\$91,614	\$1,294
2020	\$64,923	\$25,752	\$90,675	\$1,286
2019	\$63,650	\$25,248	\$88,898	\$1,257
2018	\$62,402	\$24,753	\$87,155	\$1,239
2017	\$61,179	\$24,268	\$85,447	\$1,201
2016	\$59,980	\$23,792	\$83,772	\$1,189
2015	\$59,080	\$23,434	\$82,514	\$1,177
2014	\$57,923	\$22,975	\$80,898	\$1,122
2013	\$57,662	\$22,871	\$80,533	\$1,114
2012	\$56,532	\$22,422	\$78,954	\$1,086
2011	\$55,424	\$21,982	\$77,406	\$1,032
2010	\$55,010	\$21,818	\$76,828	—
2009	\$55,141	\$21,870	\$77,011	—
2008	\$54,060	\$21,441	\$75,501	—
2007	\$53,000	\$21,021	\$74,021	—
2006	\$51,961	\$20,609	\$72,570	—
2005	\$50,943	\$20,205	\$71,148	—

## Legal Description

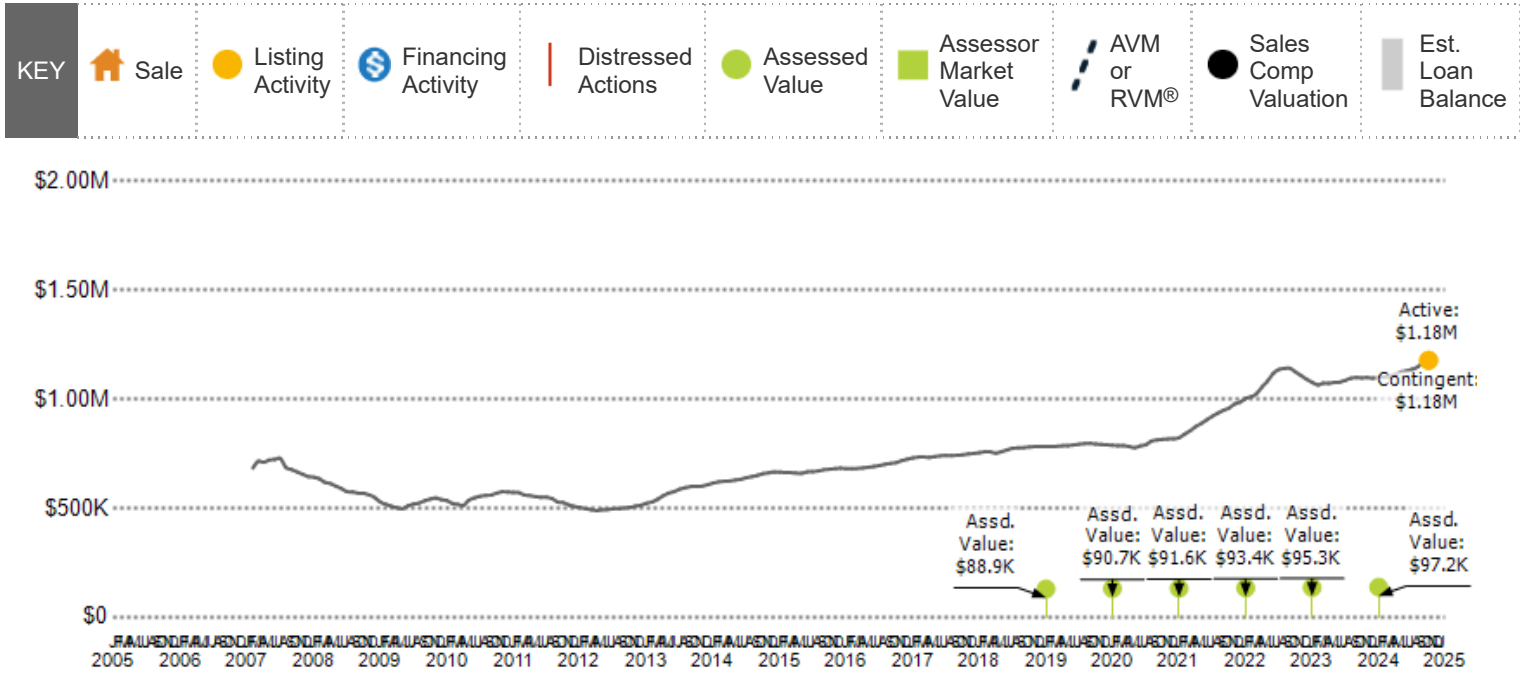
<b>Parcel Number</b>	244-033-17
<b>County</b>	Orange County
<b>Census Tract</b>	060591101.112013
<b>Carrier Route</b>	C009
<b>Abbreviated Description</b>	N TR 4398 BLK LOT 55
<b>Current Use</b>	Single Family

### Mortgage Records

Recording Date	7/30/1998	7/30/1998
Borrower Name	DOUGLAS A ROZELLE, P JANE ROZELLE	DOUGLAS A ROZELLE, P JANE ROZELLE
Vesting Type	Living Trust	Living Trust
Lender Name	BANK OF AMERICA NT&SA	BANK OF AMERICA NT&SA
Lender Type	Bank	Bank
Loan Amount	\$50,000	\$29,208
Document Number	19980491097	19980491098
Loan Type	Credit Line (Revolving)	Unknown
Finance Type	Variable	-

### Sales and Financing Activity

This chart shows a property's sales and financing history. It can be used to compare the value of the property as seen by public records, such as deeds and tax records, with the estimated home value. Actions taken against the owner, such as the issuance of a Notice of Default, are noted. Sales activity, such as listing date and price reductions, are highlighted.



Data Source: Public Record and Listing data

Update Frequency: Valuations are updated twice monthly; actions on the home, such as listing activity or distressed property notices, are updated daily as made available from public records sources

### Price Change History

Change Date	Description	New List Price	% Change
10/29/2024	Active Under Contract	\$1,179,000	-
10/29/2024	Active Under Contract	\$1,179,000	-
10/17/2024	Active	\$1,179,000	-



# Neighborhood: Housing Stats and Charts

	90630	Cypress	Orange County	California	USA
Median Estimated Home Value	\$1M	\$1M	\$1.16M	\$793K	\$369K
Estimated Home Value 12-Month Change	+6.5%	+6.2%	+9.4%	+4.5%	+4.6%
Median List Price	\$962K	\$962K	\$1.48M	\$765K	–
List Price 1-Month Change	-8.3%	-8.3%	+1.8%	+0.9%	–
List Price 12-Month Change	+5.8%	+4.6%	+6.8%	+2.1%	–
Median Home Age	52	50	46	47	43
Own	67%	67%	57%	56%	65%
Rent	33%	33%	43%	44%	35%
\$ Value of All Buildings for which Permits Were Issued	–	–	\$1.71B	\$27.9B	\$365B
% Change in Permits for All Buildings	–	–	-12%	-8%	-6%
% Change in \$ Value for All Buildings	–	–	+18%	-4%	-5%

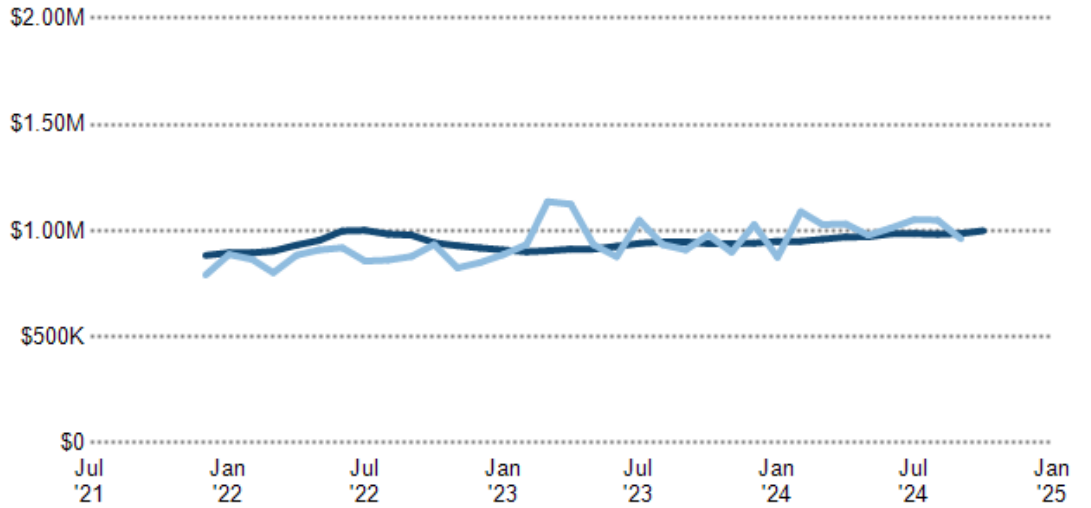
## Median Estimated Home Value vs. Median Listing Price

This chart compares a ZIP code's median estimated home value with the median listing price of Active listings. Estimated home values are generated by a valuation model and are not formal appraisals.

Data Source: Public Record and Listing data

Update Frequency: Monthly

■ Median Estimated Value  
■ Median List Price



### Median Sales Price vs. Sales Volume

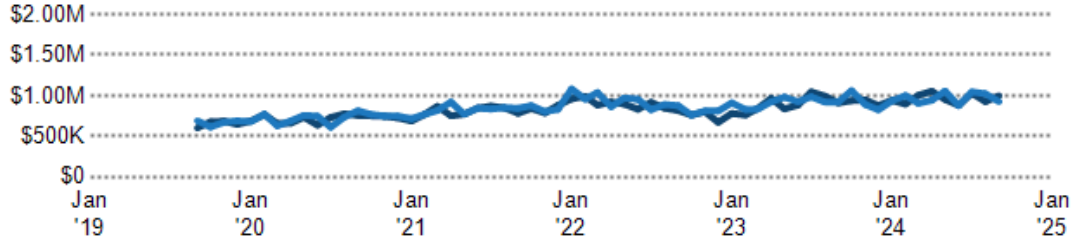
This chart compares the listings and public records sales price trend and sales volume for homes in an area.

Data Source: Public Record and Listing data

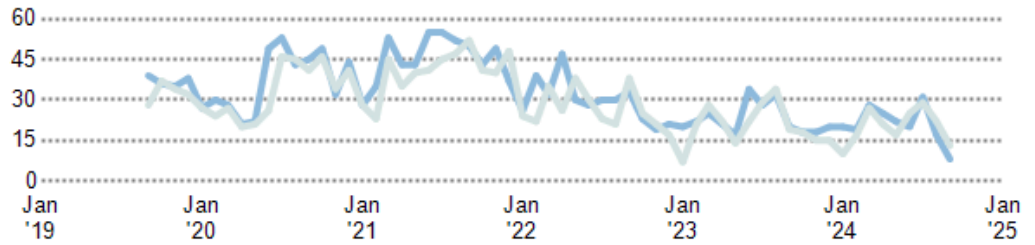
Update Frequency: Monthly

- Median Sales Price Public Records
- Median Sales Price Listings
- Sales Volume Public Records
- Sales Volume Listings

Median Sales Price



Sales Volume



### Median Listing Price vs. Listing Volume

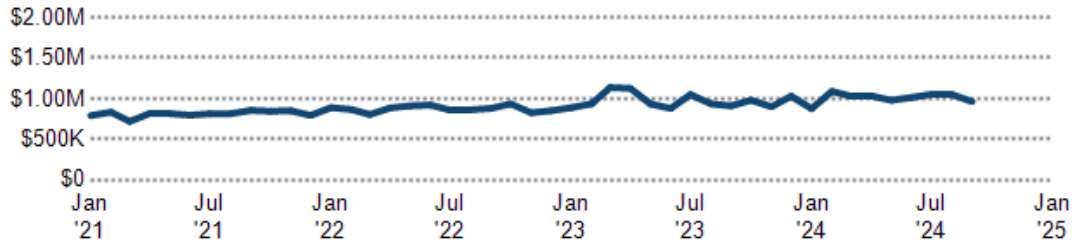
This chart compares the listings and public records sales price trend and sales volume for homes in an area.

Data Source: Public Record and Listing data

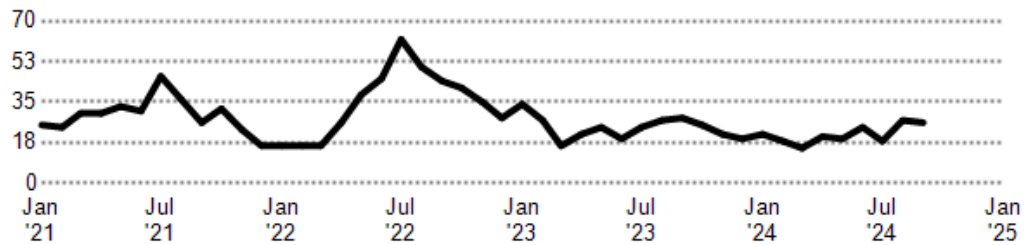
Update Frequency: Monthly

- Median List Price
- Listing Volume

Median List Price



Listing Volume



### Listing Inventory

This chart shows the number of For Sale listings in a ZIP code by Property Type.

Data Source: On- and off-market listings sources

Update Frequency: Daily

- ZIP Count Listings by PropertyType



### Inventory of Distressed Listings



This chart shows the count of distressed properties (all stages of foreclosure) that are for sale in a ZIP code.

Data Source: MLS data where licensed

Update Frequency: Daily

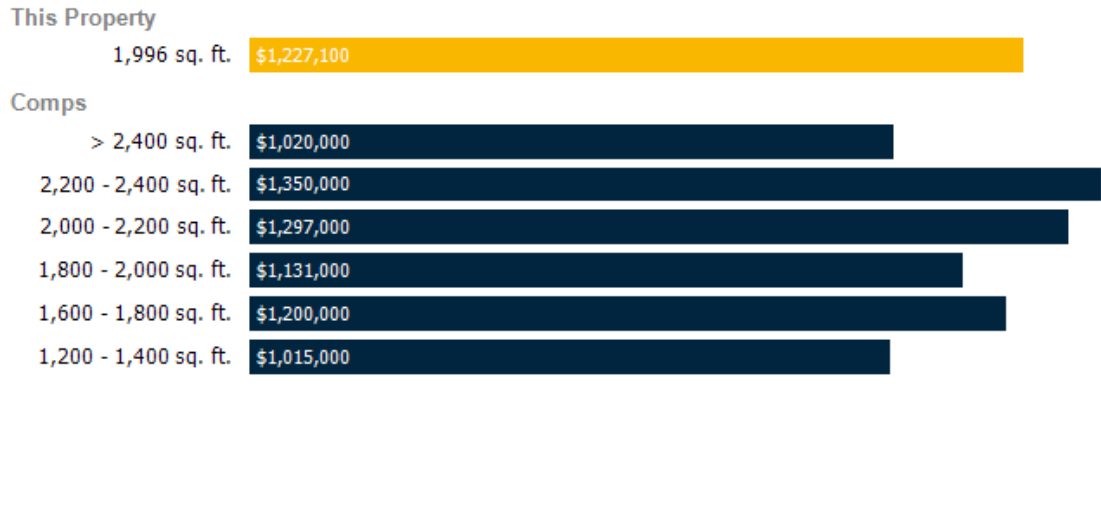
■ Inventory of Distressed Listings

### Median Sales Price by Square Footage

This chart shows the median price of homes reported sold in the past six months, according to the size of the living space (square footage sourced from public records). The amount shown for the subject property is sold data where available, or the property's estimated value when sales data are unavailable (such as non-disclosure states) or provided in range format.

Data Source: Public records and MLS data where licensed

Update Frequency: Monthly



### Price per Bedroom of Comps Sold

This chart shows the distribution of homes reported sold in the past six months at different prices per bedroom in the area of your search. The amount shown for the subject property is sold data where available, or the property's estimated value when sales data are unavailable (such as a non-disclosure state) or provided in range format.

Data Source: Public records and MLS data where licensed

Update Frequency: Monthly



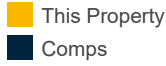


### Price per Square Foot of Comps Sold

This chart shows the distribution of homes reported sold in the past three months at different prices per square foot.

Data Source: Public records data

Update Frequency: Daily



#### This Property



#### Comps

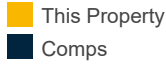


### Price Range of Comps Sold

This chart shows the distribution of homes reported sold in the past three months within different price ranges in the area of your search. The amount shown for the subject property is sold data where available, or the property's estimated value when sales data is unavailable (such as a non-disclosure state) or provided in range format.

Data Source: Public records data

Update Frequency: Daily



#### This Property



#### Comps

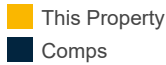


### Age Range of Comps Sold

This chart shows the distribution of homes reported sold in the past three months of different age ranges in the area of your search.

Data Source: Public records data

Update Frequency: Daily



#### This Property



#### Comps

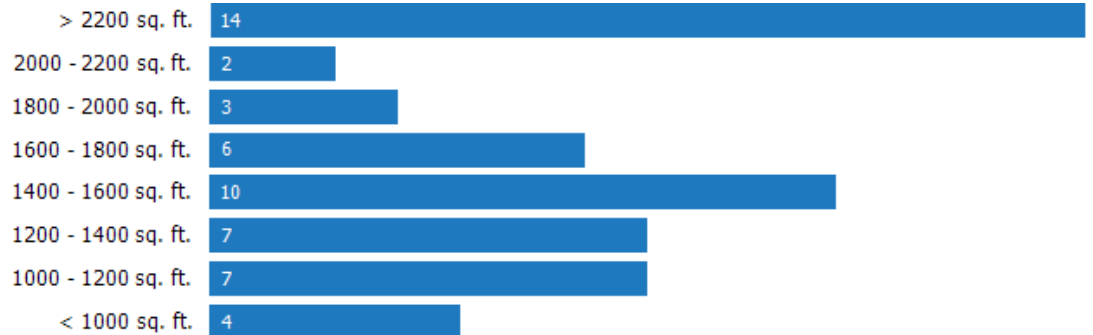
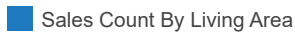


### Size of Homes Sold

This chart shows the distribution of homes reported sold in the past three months of different sizes in the area of your search.

Data Source: Public records data

Update Frequency: Daily



### Number of Bedrooms in Homes Sold

This chart shows the distribution of homes reported sold in the past three months, compared by the number of bedrooms, in the area of your search.

Data Source: Public records data

Update Frequency: Daily



■ Sales Count by Bedroom

# Neighborhood: People Stats and Charts

	90630	Cypress	Orange County	California	USA
Population	49.4K	50K	3.18M	39.4M	331M
Population Density per Sq Mi	7.39K	7.55K	4K	253	93.6
Population Change since 2020	-0.2%	-0.2%	+0.8%	+0.9%	+1.8%
Median Age	40	42	39	37	39
Male / Female Ratio	48%	49%	50%	50%	50%



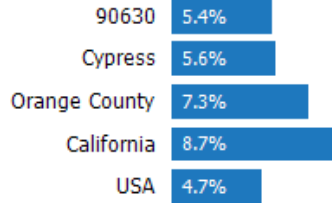
### Education Levels of Population

This chart shows the educational achievement levels of adults in an area, compared with other geographies.

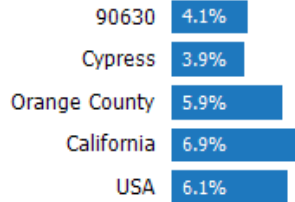
Data Source: U.S. Census American Community Survey via Esri, 2021

Update Frequency: Annually

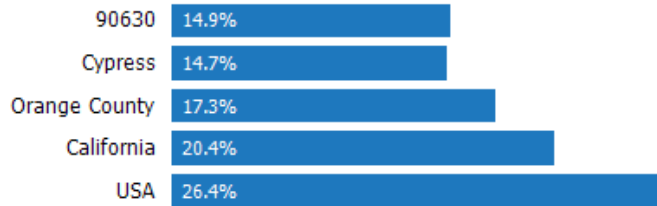
#### Less Than 9th Grade



#### 9-12th Grade/No Diploma



#### High School Graduate



#### Associate Degree



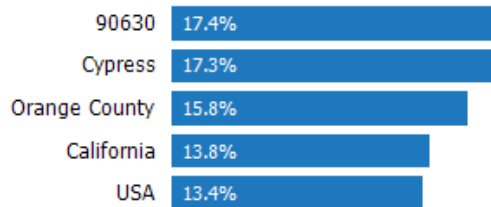
#### Bachelor's Degree



#### At Least a College Education



#### Grad/Professional Degree



### Population of Children by Age Group

This chart shows the distribution of the population of children by age range — from birth to 17 — in the area of your search.

Data Source: U.S. Census  
Update Frequency: Annually

90630



### Population of Adults by Age Group

This chart shows the distribution of the population of adults by age range — from 18 to 75-plus — in the area of your search.

Data Source: U.S. Census  
Update Frequency: Annually

90630



### Households With Children

This chart shows the distribution of households with children, categorized by marital status, in the area of your search.

Data Source: U.S. Census  
Update Frequency: Annually

90630

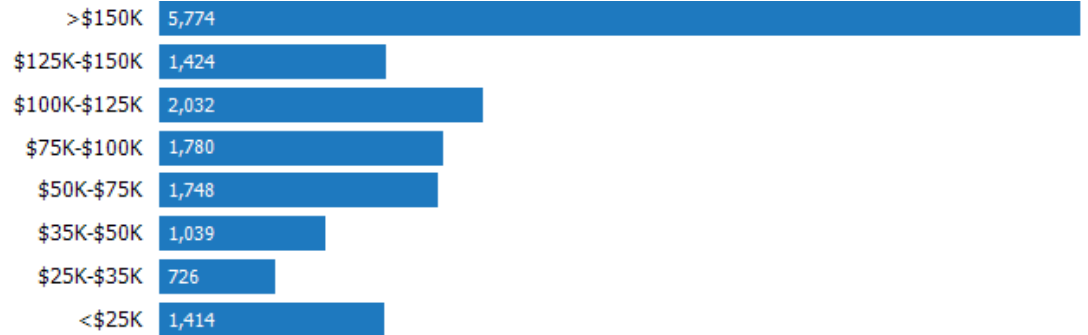


### Household Income Brackets

This chart shows annual household income levels within an area.

Data Source: U.S. Census  
Update Frequency: Annually

90630



### Presidential Voting Pattern

This chart shows how residents of a county voted in the 2020 presidential election.

Data Source: USElectionAtlas.org

Update Frequency: Quadrennially



■ Orange County

# Neighborhood: Economic Stats and Charts

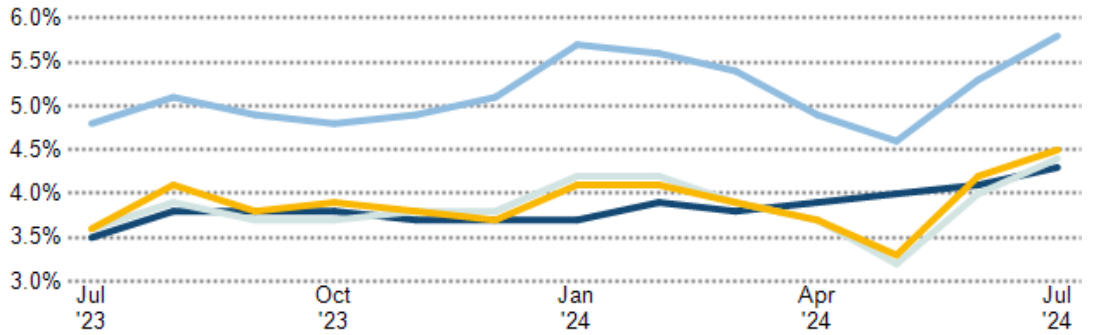
	90630	Cypress	Orange County	California	USA
<b>Income Per Capita</b>	\$46,321	\$46,827	\$50,683	\$45,591	\$41,261
<b>Median Household Income</b>	\$115,520	\$117,461	\$109,361	\$91,905	\$75,149
<b>Unemployment Rate</b>	–	4.5%	4.4%	5.8%	4.3%
<b>Unemployment Number</b>	–	1.13K	70.2K	1.12M	7.16M
<b>Employment Number</b>	–	23.8K	1.53M	18.3M	161M
<b>Labor Force Number</b>	–	24.9K	1.6M	19.4M	168M

## Unemployment Rate

This chart shows the unemployment trend in the area of your search. The unemployment rate is an important driver behind the housing market.

Data Source: Bureau of Labor Statistics

Update Frequency: Monthly

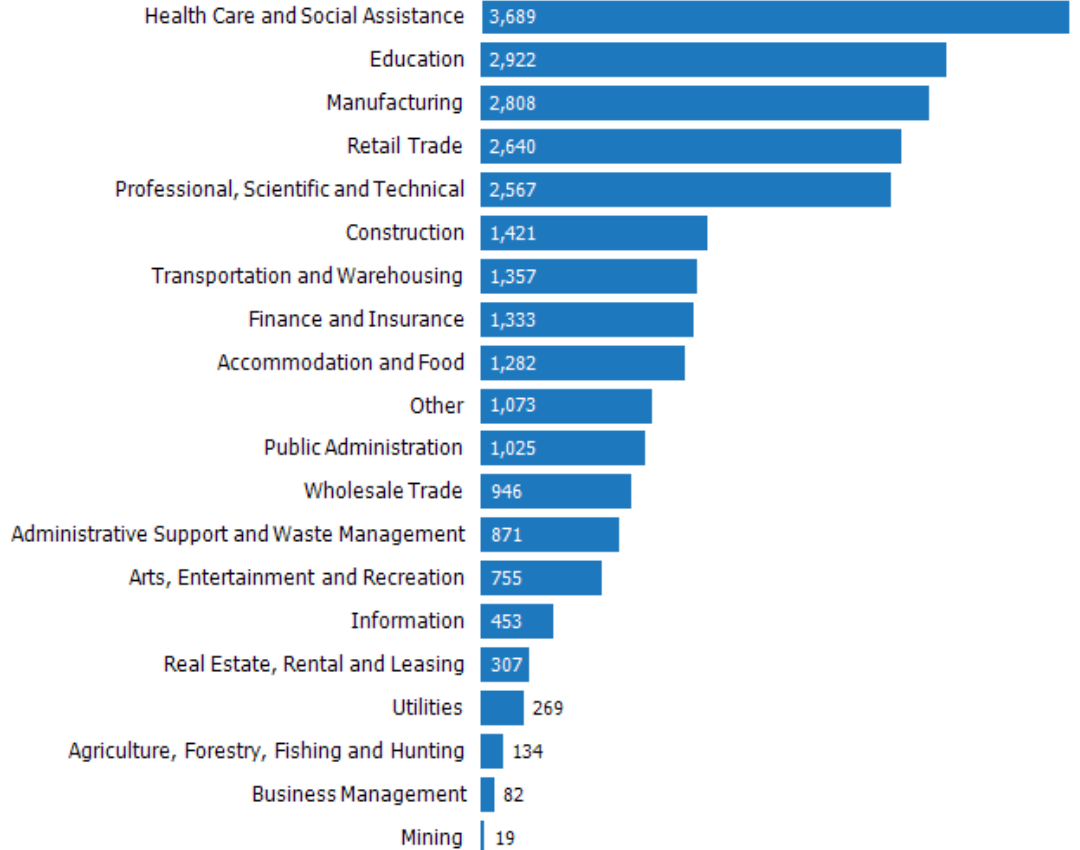


## Occupational Categories

This chart shows categories of employment within an area.

Data Source: U.S. Census

Update Frequency: Annually



# Neighborhood: Quality of Life Stats and Charts

## Quality of Life in 90630

	90630	Cypress	Orange County	California	USA
Elevation (in feet)	2,255	2,261	1,937	2,823	–
Annual Rainfall (in inches)	15.98	15.99	14.82	23.4	–
Annual Snowfall (in inches)	0	0	0.84	19.18	–
Days of Full Sun (per year)	165	165	165	159	–
Travel Time to Work (in minutes)	31	31	27	29	27
Water Quality - Health Violations	–	–	–	–	–
Water Quality - Monitoring and Report Violations	–	–	–	–	–
Superfund Sites	0	0	4	164	2,466
Brownfield Sites	No	No	Yes	Yes	Yes

## Average Commute Time

This chart shows average commute times to work, in minutes, by percentage of an area's population.

Data Source: U.S. Census

Update Frequency: Annually



90630

## How People Get to Work

This chart shows the types of transportation that residents of the area you searched use for their commute.

Data Source: U.S. Census

Update Frequency: Annually



90630

## Average Monthly Temperature

This chart shows average temperatures in the area you searched.

Data Source: NOAA

Update Frequency: Annually



90630



# School: A.E. Arnold Elementary School

## School Details

**Name**  
A.E. Arnold Elementary School

**Level**  
Elementary

**Type**  
Public

**Grades Served**  
K-6

**School District**  
Cypress Elementary School District

**Address**  
9281 Denni St, Cypress, CA 90630

**Phone**  
(714) 220-6965

## School Facts

	A.E. Arnold Elementary School	Cypress Elementary School District
<b>Overall Grade</b>	<b>A</b>	<b>A</b>
Total Enrollment	635	3,389
Students per Teacher	26:1	25:1
Students in Free Lunch Program	46%	32%
<b>Academic Grade</b>	<b>A-</b>	<b>A-</b>
Average GPA	-	-
Math Proficiency	60%	63%
Reading Proficiency	63%	68%
Gifted Students	5%	-
AP Enrollments	-	-
Graduation Rate	-	-
Average ACT Score	-	-
Average SAT Score	-	-
<b>Teacher Grade</b>	<b>A</b>	<b>A</b>
Average Teacher Salary	\$127,333	\$127,333
Teachers in 1st or 2nd Year	5%	-

*About this data: Facts and proficiency scores are provided by Niche, which compiles scores, community reviews and other data about schools across the United States. Ratings for this school are based on the most recent available facts for each school and district. Data compiled from the U.S. Department of Education, Private School Universe Survey, Common Core Data and others. Source: Niche Update Frequency: Quarterly*

## Community Reviews for this School

Posted: 6/30/2024 by Alum

Arnold Elementary is a standout school known for its safety measures and secure environment, ensuring parents' peace of mind. The variety of activities available enrich students' educational experience, fostering both academic and personal growth. Parent involvement is actively encouraged and celebrated, creating a strong sense of community. Teachers at Arnold Elementary are deeply engaged with their students, nurturing positive relationships that enhance learning. Overall, Arnold Elementary excels in providing a supportive and engaging environment where students thrive academically and socially.

Posted: 5/16/2023 by Alum

This was a great school! I made a lot of experiences! I will never forget my time here! I recommend taking your child here!

# School: Lexoxf

## School Details

**Name**  
Lexoxf

**Level**  
Middle

**Type**  
-

**Grades Served**  
-

**School District**  
-

**Address**  
Address not available

**Phone**

## School Facts

### Overall Grade

Total Enrollment

Students per Teacher

Students in Free Lunch Program

### Academic Grade

Average GPA

Math Proficiency

Reading Proficiency

Gifted Students

AP Enrollments

Graduation Rate

Average ACT Score

Average SAT Score

### Teacher Grade

Average Teacher Salary

Teachers in 1st or 2nd Year

**Lexoxf**

-

-

-

-

-

-

-

-

-

-

-

-

-

-

-

-

-

-

-

-

-

-

-

-

-

*About this data: Facts and proficiency scores are provided by Niche, which compiles scores, community reviews and other data about schools across the United States. Ratings for this school are based on the most recent available facts for each school and district. Data compiled from the U.S. Department of Education, Private School Universe Survey, Common Core Data and others. Source: Niche Update Frequency: Quarterly*

# School: Lexington Junior High School

## School Details

**Name**  
Lexington Junior High School

**Level**  
Middle

**Type**  
Public

**Grades Served**  
7-8

**School District**  
Anaheim Union High School District

**Address**  
4351 Orange Ave,  
Cypress, CA 90630

**Phone**  
(714) 220-4201

## School Facts

	Lexington Junior High School	Anaheim Union High School District
<b>Overall Grade</b>	<b>A-</b>	<b>B+</b>
Total Enrollment	1,283	27,748
Students per Teacher	25:1	21:1
Students in Free Lunch Program	49%	67%
<b>Academic Grade</b>	<b>A-</b>	<b>B+</b>
Average GPA	-	3.49 (out of 10008 responses)
Math Proficiency	51%	23%
Reading Proficiency	70%	43%
Gifted Students	11%	-
AP Enrollments	-	-
Graduation Rate	-	91%
Average ACT Score	-	26 (out of 437 responses)
Average SAT Score	-	1,200 (out of 2141 responses)
<b>Teacher Grade</b>	<b>B+</b>	<b>B</b>
Average Teacher Salary	\$104,385	\$104,385
Teachers in 1st or 2nd Year	4%	4%

*About this data: Facts and proficiency scores are provided by Niche, which compiles scores, community reviews and other data about schools across the United States. Ratings for this school are based on the most recent available facts for each school and district. Data compiled from the U.S. Department of Education, Private School Universe Survey, Common Core Data and others. Source: Niche Update Frequency: Quarterly*

# School: Cypress High School

## School Details

**Name**  
Cypress High School

**Level**  
High

**Type**  
Public

**Grades Served**  
9-12

**School District**  
Anaheim Union High School District

**Address**  
9801 Valley View St,  
Cypress, CA 90630

**Phone**  
(714) 220-4144

## School Facts

### Cypress High School

### Anaheim Union High School District

#### Overall Grade

**A+**

**B+**

Total Enrollment

**2,820**

**27,748**

Students per Teacher

**25:1**

**21:1**

Students in Free Lunch Program

**48%**

**67%**

#### Academic Grade

**A**

**B+**

Average GPA

**3.59 (out of 1836 responses)**

**3.49 (out of 10008 responses)**

Math Proficiency

**48%**

**23%**

Reading Proficiency

**74%**

**43%**

Gifted Students

**10%**

**-**

AP Enrollments

**-**

**-**

Graduation Rate

**96%**

**91%**

Average ACT Score

**28 (out of 109 responses)**

**26 (out of 437 responses)**

Average SAT Score

**1,260 (out of 469 responses)**

**1,200 (out of 2141 responses)**

#### Teacher Grade

**A-**

**B**

Average Teacher Salary

**\$104,385**

**\$104,385**

Teachers in 1st or 2nd Year

**3%**

**4%**

*About this data: Facts and proficiency scores are provided by Niche, which compiles scores, community reviews and other data about schools across the United States. Ratings for this school are based on the most recent available facts for each school and district. Data compiled from the U.S. Department of Education, Private School Universe Survey, Common Core Data and others. Source: Niche Update Frequency: Quarterly*

## Community Reviews for this School

Posted: 6/17/2024 by Senior

My experience with Cypress High School was enriching and memorable. The school offered a supportive environment with dedicated teachers who fostered academic growth and personal development. I appreciated the wide range of extracurricular activities, from sports to clubs, which allowed me to explore my interests and build lifelong skills. The sense of community was strong, and I formed lasting friendships with peers from diverse backgrounds. Cypress High School not only prepared me academically but also instilled values of leadership, teamwork, and responsibility that continue to guide me today. Overall, it was a positive and formative experience in my educational journey.

Posted: 6/14/2024 by Senior

I love this school the campus and the school spirit is always top notch. Most teachers care about you and will always be there for you and others may slack off but a majority are always letting you know when they are available and how they can help you.

Posted: 6/12/2024 by Junior

as a student at Cypress, my needs are being met for my social and educational life. I have freedom in what I do and through extracurriculars I make friends well and meet new people all the time.

Posted: 6/4/2024 by Senior

My experience at Cypress High School had its ups and downs. Though it wasn't all sunshine and rainbows, I was able to new friends, connect with teachers and make some good memories. I will be visiting here and there if time allows, to be able to reconnect with teachers. I would like to see some changes in the way my district is changing the school. Rather than trying to lay off teachers that are the cornerstone of high school, funding for building new facilities such as a stadium that is unnecessary should be cut.

Posted: 5/12/2024 by Alum

"Cypress is known for its school spirit and sports I'll say that. It is pretty much known in the district as a sports school. But for a nerd like me who didn't get into the ""smart people"" high school aka Oxford Academy. It's very meh, they have AP courses and some other college prep stuff yeah, if you want to be good at academics it's a good choice, especially if you are going to pair it with sports. Though I can't really compare it to other schools in the district."



## About RPR (Realtors Property Resource)

- Realtors Property Resource® is a wholly owned subsidiary of the National Association REALTORS®.
- RPR offers comprehensive data – including a nationwide database of 164 million properties – as well as powerful analytics and dynamic reports exclusively for members of the NAR.
- RPR's focus is giving residential and commercial real estate practitioners, brokers, and MLS and Association staff the tools they need to serve their clients.
- This report has been provided to you by a member of the NAR.



## About RPR's Data

RPR generates and compiles real estate and other data from a vast array of sources. The data contained in your report includes some or all of the following:

- **Listing data** from our partner MLSs and CIEs, and related calculations, like estimated value for a property or median sales price for a local market.
- **Public records data** including tax, assessment, and deed information. Foreclosure and distressed data from public records.
- **Market conditions and forecasts** based on listing and public records data.
- **Census and employment data** from the U.S. Census and the U.S. Bureau of Labor Statistics.
- **Demographics and trends data** from Esri. The data in commercial and economic reports includes Tapestry Segmentation, which classifies U.S. residential neighborhoods into unique market segments based on socioeconomic and demographic characteristics.
- **Business data** including consumer expenditures, commercial market potential, retail marketplace, SIC and NAICS business information, and banking potential data from Esri.
- **School data and reviews** from Niche.
- **Specialty data sets** such as walkability scores, traffic counts and flood zones.



## Update Frequency

- Listings and public records data are updated on a continuous basis.
- Charts and statistics calculated from listing and public records data are refreshed monthly.
- Other data sets range from daily to annual updates.

## Learn more

For more information about RPR, please visit RPR's public website: <https://blog.narrpr.com>

